

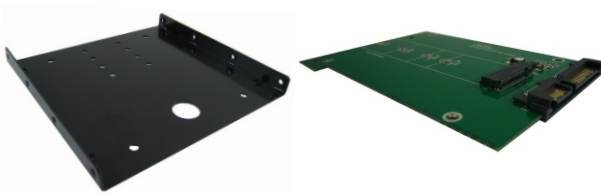
AD901E Assembly Guide

Before Assembling:

1. Please check the accessory list before assembly. Contact your local dealer if you find any parts missing.
2. Please read through the assembly guide.

3.5" Bracket




AD901E Adapter

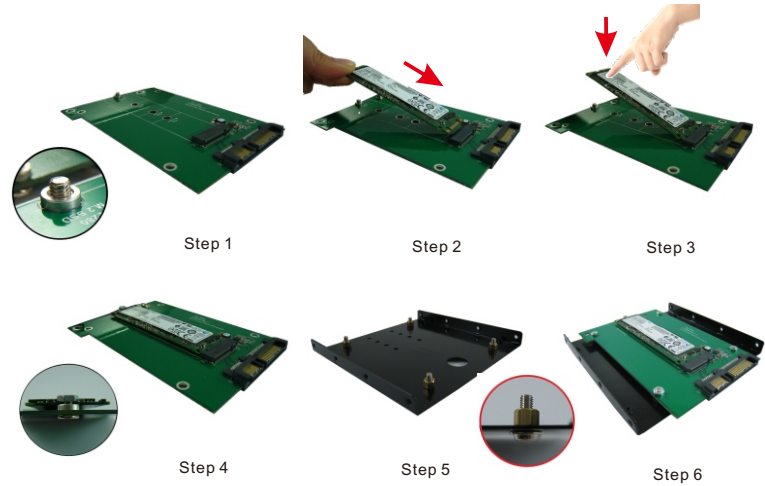


Accessory Package

- (1) M3x5 Screw *1pc
P/N: 13MISW00005M11  [for M.2 NGFF SSD]
- (2) M3 Nut *1pc
P/N: 13MINU00002M11  [for M.2 NGFF SSD]
- (3) Copper Nut /H: 1.45mm *1pc
P/N: 13MICA00001M05  [for M.2 NGFF SSD]

Accessory package for 3.5" Bracket

- (4) M3x8 Screw *4pcs
P/N: 13MISW00006M11 
- (5) M3x4mm Cooper nut *4pcs
P/N: 13MICP00003M11 
- (6) M3 Nut *4pcs
P/N: 13MINU00002M11 



- Step 1: Put copper nut on the same side of the NGFF connector; and screw M3x5mm screw from bottom to top of the adapter.
- Step 2: Insert M.2 NGFF SSD into M.2 67pin socket. (Figure 2)
- Step 3: Press down M.2 NGFF SSD and aim to the copper nut hole. (Figure 3)
- Step 4: Using M3 nuts to fix M.2 NGFF SSD on the adapter (Figure 4), namely complete the installation.
- If your M.2 NGFF SSD is 2280 form factor, pls ignore step 1. Use M3 x 3 Screw to fix M.2 NGFF SSD.
- Step 5: Put M3x8 screw from bottom side to top side of 3.5" frame and fix with M3x4 copper nut.
- Step 6: Fixed assembled M.2 SSD + Adapter on 3.5" frame with M3 nut.